

Linear
MOTIONEERING
Tools

Micron
MOTIONEERING

Product
Selectors

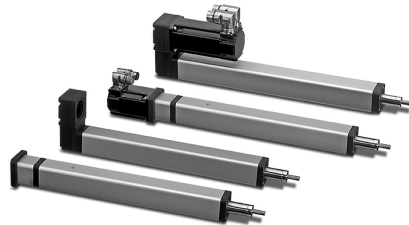
Interactive
3D Models

Precision
Ball Selector

Motioneering
Toolbar



Why are Machine Designers switching from Pneumatic to Electromechanical Actuation?



When it comes to linear actuators, machine designers have a handful of options at their disposal. However, as a recent *Machine Design* article details, electromechanical actuators have been seeing a continuous increase in usage due in part to their speed, precision and size.

Whether for factory automation, material handling or other applications, these electric rod-style actuators are being converted from their pneumatic alternatives, resulting in:

- Improved machine performance.
- Reduced equipment size.
- Increased energy conservation.
- Less maintenance and total cost of ownership.

The article goes on to explore the factors in selecting the ideal electromechanical actuator.

[Learn More About Pneumatic-to-Electric Conversion >](#)

[Read The Article >](#)

+ education/events



Free Webinar: How Can You Benefit From The Latest Linear Actuator Advancements?

27 February @ 9 am (UK) / 10 am (Germany)

Are you looking for ways to advance your machine performance?

The latest advancements in clean, electromechanical actuator technology are reshaping how machine designers approach their work.

Anders Karlsson, Product Line Specialist for Industrial Linear Actuators, will detail in the webinar how your machine designs will be able to **handle uneven or awkward loads, lift heavier loads, integrate movement of multiple end points and eliminate mechanical linkage**. We hope you join us!



[Register today >](#)

+ news



Thomson Publishes Updated Electrak HD Brochure

Available in Europe in both printed and digital versions:

"Electrak HD – Linear Actuator with Flexible Onboard Controls, Superior Performance and Unmatched Environmental Protection"
in [English](#) and [German](#).

This updated Thomson brochure details the features, benefits and technical specifications of our next generation smart, electromechanical, heavy duty linear actuator and illustrates application examples across different industries. The recently released 16 kN high load models and the synchronization option are included.

[Order a free printed sample >](#)

Share via Social Media:



Share via e-mail:



Publisher: Thomson Industries, Inc.

sales.europe@thomsonlinear.com

THOMSON NEFF GmbH

Nürtinger Str. 70 | 72649 Wolfschlugen | Germany

Phone +49 7022 504 0 | Fax +49 7022 504 405

sales.germany@thomsonlinear.com

www.thomsonlinear.com

THOMSON Toilo Linear AB

Estridsväg 10 | 29165 Kristianstad | Sweden

Phone +46 44 246700 | Fax +46 44 244085

sales.scandinavia@thomsonlinear.com

Register Office: Local Court Stuttgart, HRB 220154

Managing Directors: Wolfgang Becker, Hannes Koch, Scott Benigni